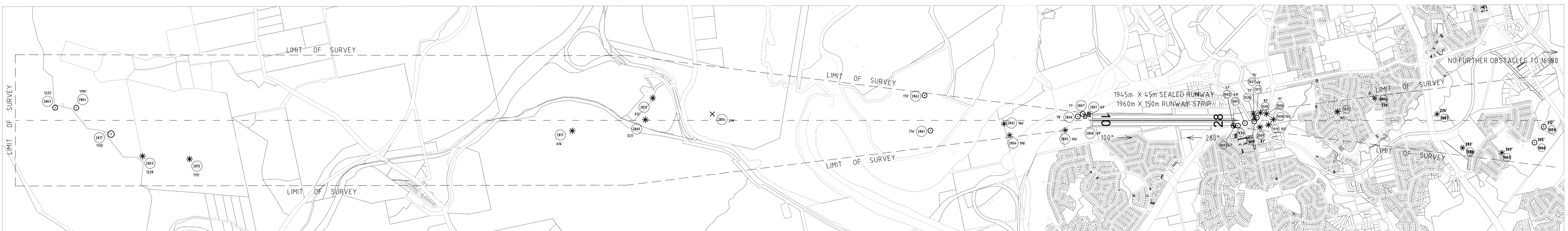


Mt Larcon
● RL 6319m
2073'



LEGEND

OBSTRUCTIONS & OBSTACLES

- Identification Number: 1801
- Top Elevation in Feet: 49'
- Tree(s) or Shrub(s): [Symbol]
- Building or large structure: [Symbol]
- Pole, Tower, Antenna, spire etc: [Symbol]
- Moving Vehicle: [Symbol]
- Terrain: [Symbol]

GEOGRAPHICAL FEATURES

- Transmission line(s) or overhead cable line(s): [Symbol]
- Fence Line: [Symbol]
- Railway Line(s): [Symbol]
- Airport Boundary: [Symbol]
- River, Creek: [Symbol]
- Road, Track: [Symbol]

AMENDMENT RECORD

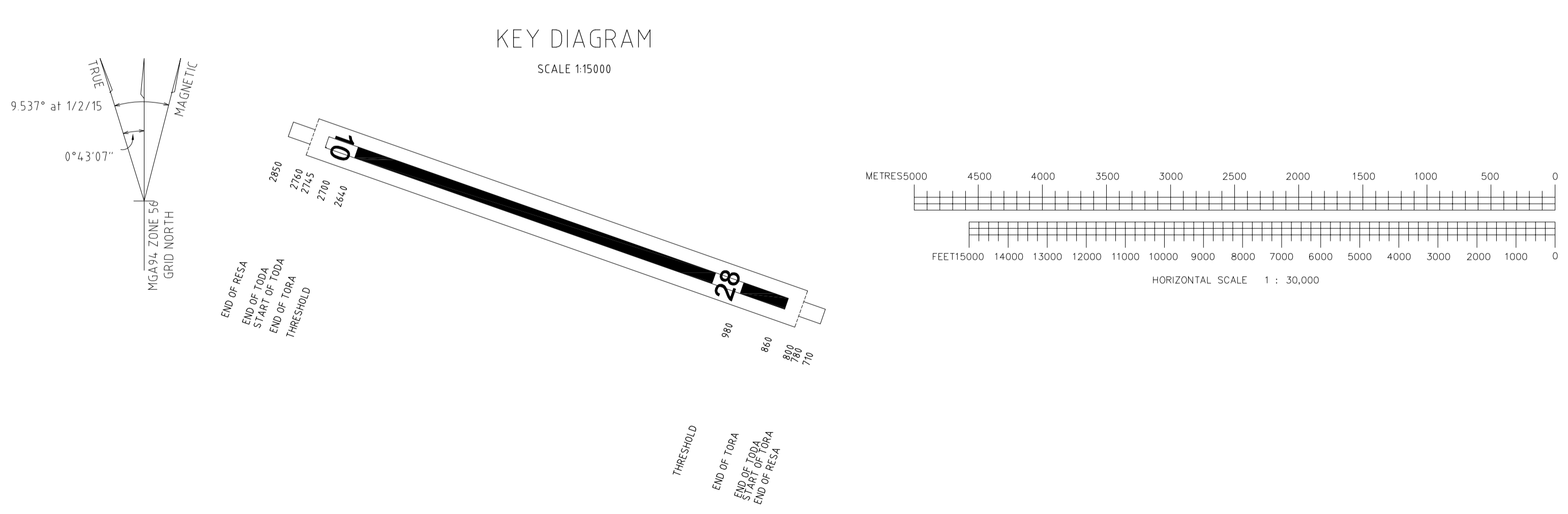
No.	Date	Amendment
B	2.09.2010	Resurveyed and Updated
C	14.10.2011	Resurveyed and Updated
D	7.8.2013	Resurveyed and Updated
E	6.2.2015	Resurveyed and Updated. Declared Day Amended
F	26.11.2015	Decl from TODA and correction 1000 (1000, 1000)
F	07.03.2017	Resurveyed and Updated
G	04.12.2018	Resurveyed and Updated

LIST OF OBSTRUCTIONS - 2018

OBSTACLE ID NUMBER	DIST FROM START OF TAKE OFF RUN	OFFSET FROM CL	AHD ELEVATION (Metres)	DESCRIPTION OF OBSTACLE	MGSA4 CO-ORDINATES EAST	MGSA4 CO-ORDINATES NORTH	DIST FROM END OF CLEARWAY	ELEVATION (Feet)	TAKE-OFF GRADIENT
1001	2105.3	38.0R	14.92	FENCE	320317.8	7358664.1	160.3	48.9	1.99%
1002	1946.2	75.0R	12.44	FENCE	320155.4	7358692.1	1.2	40.8	58.17%
1003	1946.5	85.5R	14.27	ROAD - 2.5 m High	320152.2	7358672.1	1.5	46.8	108.54%
1004	3099.1	70.22	19.22	EUC. TREE	322133.5	7358590.0	1064.1	230.4	2.95%
1005	2320.6	106.3L	25.39	EUC. TREE	320568.8	7358728.7	375.6	83.3	3.64%
1006	2404.5	92.3L	27.89	EUC. TREE	320643.2	7358687.6	498.5	81.4	3.51%
1007	2238.4	28.2L	22.92	EUC. TREE	320465.3	7358682.3	293.4	75.2	3.81%
1008	2501.8	33.2L	31.76	EUC. TREE	320708.7	7358680.7	566.8	104.2	3.60%
1009	2313.1	93.9R	28.57	EUC. TREE	320486.4	7358642.9	369.1	87.2	4.03%
1010	2435.5	62.7R	31.41	EUC. TREE	320621.0	7358631.1	490.5	103.0	4.01%
1011	2269.9	35.7L	20.91	LIGHT POLE	320496.5	7358676.3	323.9	68.6	2.84%
1012	3396.1	122.8L	38.50	CYPRESS TREE	321588.7	7358387.0	1451.1	105.4	3.09%
1025	2006.9	14.0R	18.48	LIGHT POLE	320448.9	7358645.4	299.9	83.9	2.87%
1026	2223.6	89.1L	23.40	EUC. TREE	320471.5	7358744.7	278.9	78.8	4.19%
1028	2006.9	73.4R	14.40	NO STANDING SIGN	320213.2	7358683.4	61.9	47.2	4.30%
1029	6266.9	88.0 R	94.97	POWER PYLON	324226.1	7357233.8	4321.9	311.8	1.93%
1060	6137.3	308.4 R	92.86	POWER PYLON	324511.0	7357089.9	4192.3	305.0	1.95%
1063	5884.2	449.3 R	94.30	EUC. TREE	323557.1	7357088.1	3739.2	309.4	2.22%
1086	5135.4	381.3 R	88.20	EUC. TREE	323662.7	7357334.4	3190.4	283.3	2.35%
1087	4760.4	87.6L	68.70	EUC. TREE	322662.7	7357094.0	2655.4	226.6	2.05%
2801	2032.5	83.6R	21.08	Railway Gantry	318308.7	7359000.5	52.5	69.2	5.74%
2802	3213.4	46.1L	50.64	Euc. Tree	317151.7	7359770.4	1233.4	106.1	2.65%
2803	3208.4	408.2L	374.16	Tree on Hill	305896.1	7363327.4	13208.4	1327.6	2.70%
2804	3134.8	59.80	59.80	Euc. Tree	317173.2	7359594.8	1154.8	196.2	3.62%
2805	2362.4	136.5L	32.23	Euc. Tree	317924.4	7359402.5	382.4	105.7	3.71%
2806	2198.0	51.6R	23.84	Railway Light	318153.3	7359521.5	208.0	77.6	2.71%
2807	2118.7	87.3R	23.45	Railway Light	318228.6	7359532.6	136.7	76.9	3.88%
2811	3225.3	145.5L	187.62	Tree on Hill	314446.6	7381673.0	7245.3	615.8	2.35%
2812	8104.8	310.4R	95.04	Tree on Hill	312655.1	7381731.3	6124.8	311.8	1.26%
2814	7275.0	192.8L	86.65	Shed	311334.2	7381046.5	5258.7	216.7	0.92%
2815	14544.1	537.3L	339.75	Tree on Hill	308290.2	7383073.3	12574.1	1114.7	2.56%
2817	15647.1	109.6L	345.81	Aerial on Steel Pole	314446.6	7381673.0	7245.3	615.8	2.35%
2860	8207.8	9.6R	98.95	Euc. Tree	312458.1	7381481.8	6227.8	324.9	1.30%
2861	4238.8	142.2L	53.71	Power Pylon	325815.2	7360520.7	2568.8	176.2	1.58%
2862	4320.6	347.8R	51.76	Power Pylon	318237.0	7360510.0	2340.6	169.6	1.44%
2863	16424.8	178.8R	375.47	Power Pylon	304762.6	7384367.4	14444.8	1225.3	2.47%
2864	16110.8	175.6R	382.07	Power Pylon	306038.7	7384099.3	14103.8	1189.9	2.44%

CO-ORDINATES AND LEVELS OF TAKE OFF SPLAY ORIGINS.

EAST	MGSA4 CO-ORDINATES NORTH	AHD ELEVATION	TAKE OFF ORIGIN
320179.2	7358753.2	11.74	10 Take Off ORIGIN
318330.4	7359404.2	18.07	28 Take Off ORIGIN



NOTES

PREPARED BY AIRPORT SURVEYS FOR GLADSTONE AIRPORT
SURVEYED - Airport Surveys Pty Ltd
DRAWN - P.J.F DECEMBER 2018

RWY 10/28 - DECLARED DISTANCES

RWY 10	RWY 28
1885 TAKE-OFF RUN AVAILABLE (TORA)	1920
1945 TAKE-OFF DISTANCE AVAILABLE (TODA)	1980
1885 ACCELERATE-STOP DISTANCE AVAILABLE	1920
1780 LANDING DISTANCE AVAILABLE (LDA)	1720

HORIZONTAL DISTANCES ARE IN METRES, ELEVATIONS ARE IN FEET
MAGNETIC DECLINATION 9.637°. ANNUAL VARIATION -0.020° at 1st Feb 2015

AERODROME OBSTACLE CHART - ICAO ANNEX 4 TYPE A (OPERATING LIMITATIONS)

GLADSTONE AIRPORT - QUEENSLAND, AUSTRALIA

RUNWAY 10/28

NOTE: TO BE READ IN CONJUNCTION WITH CURRENT NOTAMS

GLA/001 SHEET 1 OF 1 - EDITION G - DECEMBER 2018